



RESIDENCE FURNISHING STANDARDS FOR ELITE ALLIANCE'S RENTAL PROGRAM



Furniture Quality and Standards

Owners shall be responsible for furnishing and maintaining their Residence in a rent-able, first-class manner and condition with complete furnishings, fixtures and equipment. If an owner chooses not to partake of the all-inclusive Grupo Espiritu Residence Furnishings Package, owner should reference the Residence Standards list below which serves as a minimum guideline. The items on this list are required for the rental program; however, the actual items are to be selected by each owner and be of a quality and appearance commensurate with the Grupo Espiritu Furniture Package. The photos below are provided as benchmarks and examples for the quality, materials and finishes of the furniture required for the rental program followed by suggested materials and color palettes.

VESTIBULE

1 Console Table

1 Mirror



LIVING ROOM (seating for 6 guests minimum)

- 2 Upholstered Armchair 1 Coffee Table
- 2 Table Lamps
- 1 Sofa (if a sofa bed, queen size preferred)
- 2 Side Tables
- 3 or 4 Artwork



DINING ROOM

1 Dining Table (accommodate up to 6 guests)

6 Dining Chairs

1 Desk Chair

1 Desk Lamp

1 Desk

2 to 3 Art Work



KITCHEN

2 Counter Stools



MASTER BEDROOM

- 1 King Headboard & Frame
- 1 Full Length Mirror (behind closet door)
- 2 Night Stands
- 2 Night Stand Lamps
- 1 Bench
- 1 Lounge Chair & 1 Side Table
- 1 Dresser (6 Drawer)
- 3 to 4 Artwork



GUEST BEDROOM (two twin bed configuration)

- 2 Twin Headboards & Frames
- 1 Full Length Mirror (behind closet door)
- 1 Night Stand
- 1 Night Stand Lamp
- 1 Dresser (4 drawer) or Media Cabinet to contain drawers and enclosed space for a refrigerator (Lock Off option)
- 2 Benches
- 1 Lounge Chair & 1 Side Table
- 3 to 4 Artwork



GUEST BEDROOM (two queen beds configuration)

2 Queen Headboards & Frames

1 Full Length Mirror (behind closet door)

1 Night Stand

1 Night Stand Lamp

1 Dresser (4 drawers) or Media Cabinet to contain drawers and enclosed space for a refrigerator (Lock Off option)

2 Benches

1 Lounge Chair & Side Table

3 to 4 Artwork



GUEST BEDROOM (one queen bed configuration)

- 1 Queen Headboard & Frame
- 1 Full Length Mirror (behind closet door)
- 2 Night Stands
- 2 Night Stand Lamps
- 1 Dresser (4 drawers) or a Media Cabinet to contain drawers and enclosed space for a refrigerator for a Lock Off option
- 1 Bench
- 1 Lounge Chair & 1 Side Table
- 3 to 4 Artwork



TERRACE

1 Teak Dining Table (accommodates up to 6 guests)

6 Teak Dining Chairs

2 Teak Chaise Lounge Chairs

1 Teak Side Table



GUEST ROOM TERRACE

2 Teak Chaise Lounge Chairs

1 Teak Side Table



MATERIALS AND COLOR PALLETES

INTERIOR WOOD MATERIALS

WALNUT WOOD



ASH WOOD



OAK WOOD



FINISHES

- INKED
- NATURAL COLOR VARNISH
- WOOD VENEER
- SOLID WOOD

EXTERIOR WOOD MATERIALS

TEAK WOOD



CUMARU WOOD

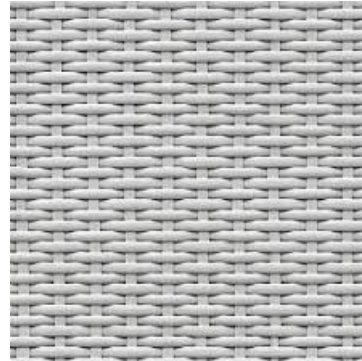
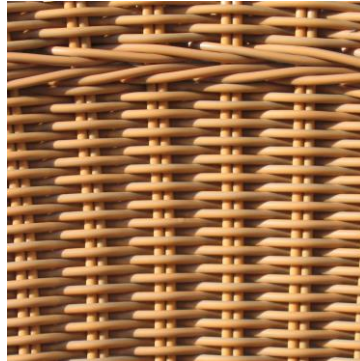
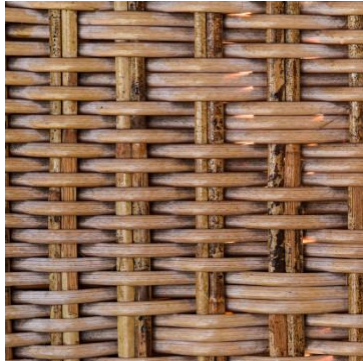


FINISHES

- OILED
- SOLID WOOD

EXTERIOR FURNITURE MATERIALS

RATTAN OR WICKER

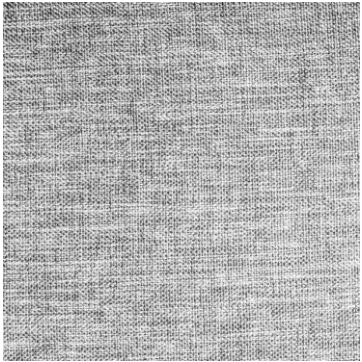


MATERIALS OPTIONS:

- NATURAL FIBER
- PLASTIC FIBER

FURNITURE FABRIC MATERIALS

COTTON



LINEN



SUEDE



LEATHER

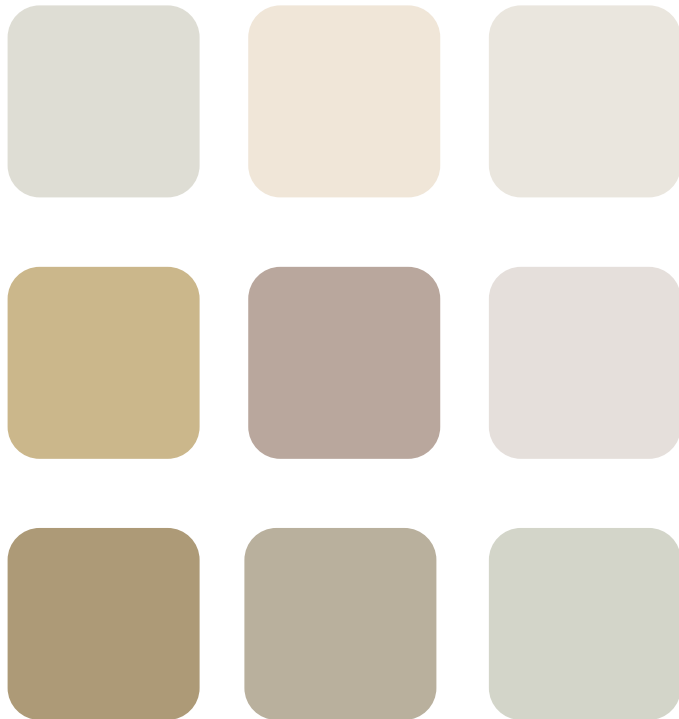


MATERIALS OPTIONS:

- NATURAL FABRICS
- SYNTHETIC FABRICS

FURNITURE PALETTE

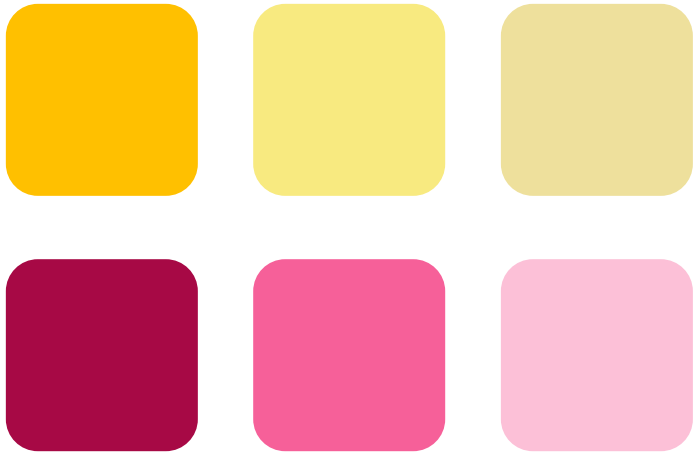
NEUTRAL



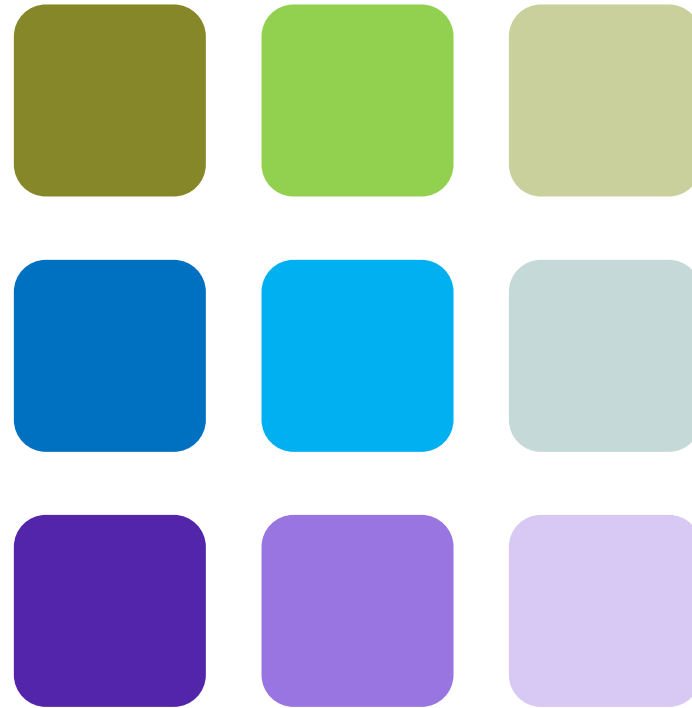
ALL UPHOLSTERED
FURNITURE OR THAT HAVE
FABRIC IN THEIR
STRUCTURE MUST BE IN
NEUTRAL COLORS.

ACCENT COLOR PALETTE

HOT COLORS



COLD COLORS



DECORATIVE ACCENTS
CAN BE IN CHEERFUL OR
NEUTRA COLORS